



THE ASPEN CLINIC

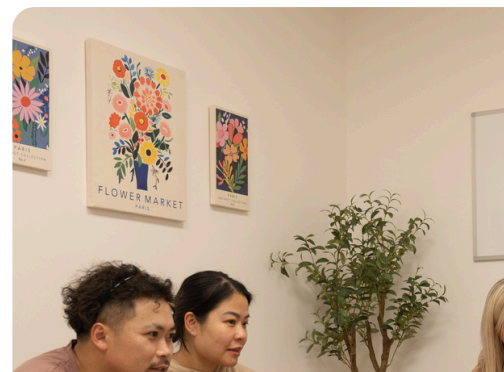
NHS Right to Choose GP Referral Pack.

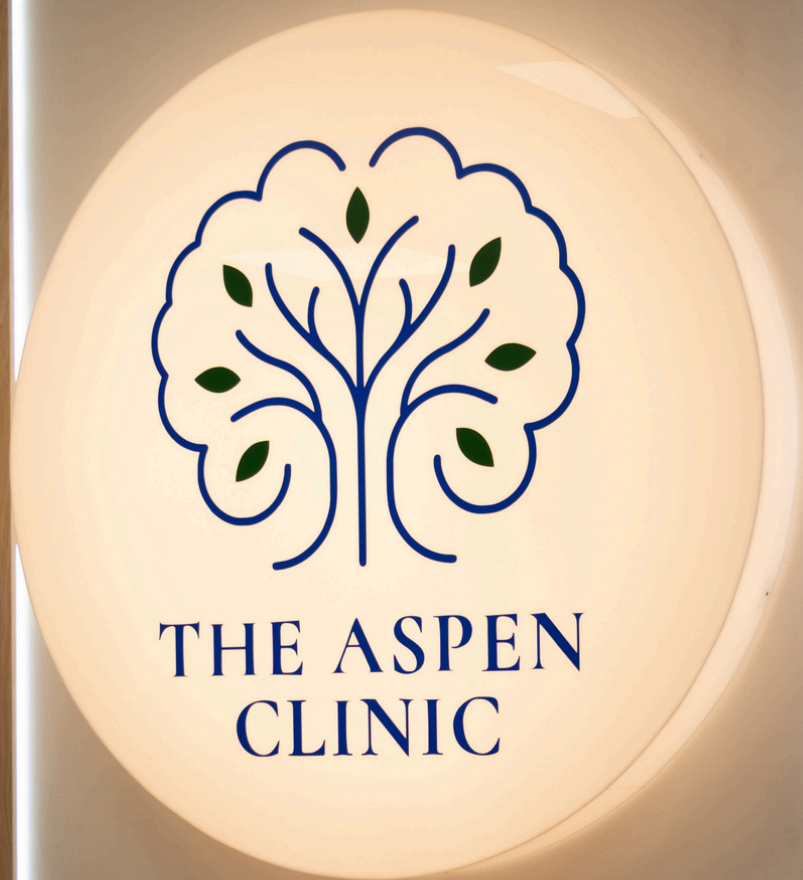
Specialist ADHD & Autism Services.

theaspenclinic.co.uk

GP Referral Guidance & Clinical Information

This pack is designed to support GPs in referring patients to The Aspen Clinic through the NHS Right to Choose pathway, helping people access timely specialist neurodevelopmental assessment and ongoing support.





About The Aspen Clinic

The Aspen Clinic is a specialist neurodevelopmental service providing ADHD and autism assessments and ongoing support for adults, children, and young people.

We work in partnership with primary care to offer timely access to specialist care, collaboratively designed pathways, clear clinical reporting, and joined up pathways while maintaining continuity with GPs.

Services Available for GP Referral

Adult ADHD
assessments

Child and adolescent
ADHD assessments

Adult autism
assessments

Child and adolescent
autism assessments

Children and young
people Dyslexia
assessment and support

Comprehensive diagnostic
reports aligned with NICE
guidance

Clear recommendations
and shared care guidance
where appropriate

Children and young
people Dyspraxia
assessment and support

Adult Dyslexia
assessment and support

Adult Dyspraxia
assessment and support

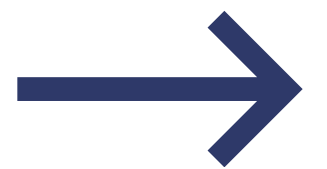


NHS Right to Choose

Patients have a legal right to choose their provider for specialist services, including ADHD and autism assessments.

The Aspen Clinic is an NHS provider and can accept referrals under NHS Right to Choose. Our service and pathways are designed to ensure the process is streamlined to support both GPs and patients to minimise administrative and clinical burden.

Referral Process & Clinical Framework





How To Refer

Please submit all referrals to: NHSreferrals@theaspenclinic.co.uk

To support you in capturing all the required patient details, we have designed an Aspen referral form for you to complete. To access the form please download from our website, complete and send to the email above. **Alternatively, you may wish to use an alternative referral form which we will also accept.**



Scan the QR for our form or
alternatively go to:
theaspenclinic.co.uk/nhs-gp/



Assessment Timeframes

Referrals are reviewed promptly, and patient assessments begin on receipt of referral. Our service is designed to minimise waiting times for patient experience while maintaining high clinical quality and safety.



Clinical Governance & Assurance

- NHS aligned clinical governance frameworks
- Consultant Psychiatrist led service
- Specialist multidisciplinary team



6. Shared Care Arrangements

We recognise the significant pressures currently facing primary care.

At The Aspen Clinic, we understand that entering into shared care agreements is not always possible or appropriate for every GP practice.

For this reason, participation in shared care with Aspen is not an obligation. Where a GP is willing to participate, shared care can support continuity of treatment within primary care.

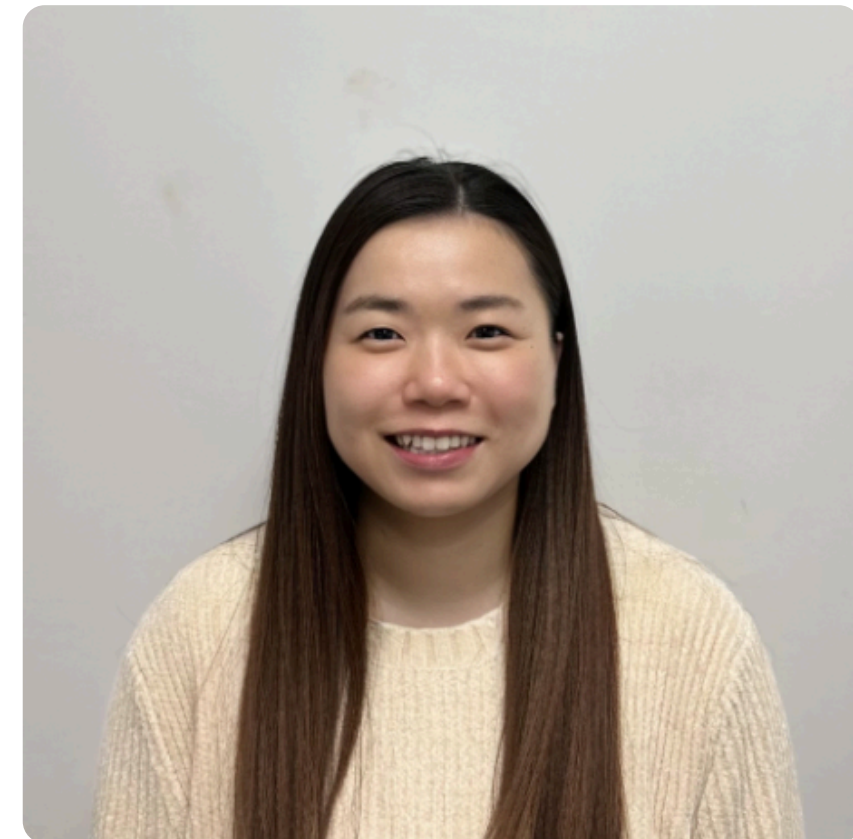
However, if shared care is not undertaken, The Aspen Clinic is able to retain prescribing responsibility and maintain full clinical oversight of the patient's care.

Our pathways have been designed to recognise system pressures while keeping patient safety, continuity of care, and collaborative working at the centre of decision making. We aim to work alongside GPs in a way that is supportive, flexible, and clinically robust.

Our Multidisciplinary Team

At The Aspen Clinic, patients are supported by a Consultant Psychiatrist led multidisciplinary team of experienced professionals who work together to provide safe, thorough, and joined up care.

This collaborative approach ensures assessments are holistic and decisions are made carefully and in line with best practice.





Our Commitment

The Aspen Clinic is committed to becoming a trusted partner to all GPs, delivering high quality assessments and ongoing support while recognising the realities and pressures within primary care.

Our focus is always on safe, compassionate, and patient centred care.

To refer a patient, discuss our pathways, or explore other collaboration opportunities, please do not hesitate to contact our team.





Please contact us on

Email: NHSreferrals@theaspenclinic.co.uk

Contact number: 0161 560 5905

Website: theaspenclinic.co.uk/nhs-gp/

**We welcome referrals and look forward
to working in partnership with you.**

theaspenclinic.co.uk